

# 144 WEST 27<sup>TH</sup> STREET

Between 6th & 7th Avenues

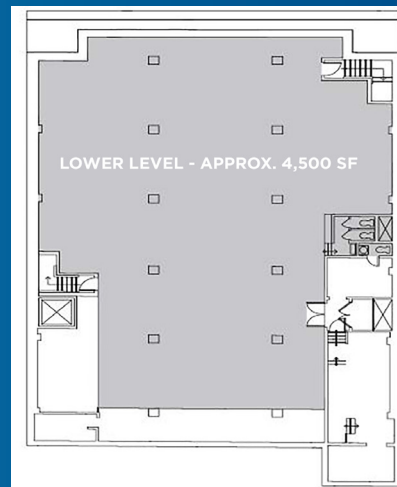
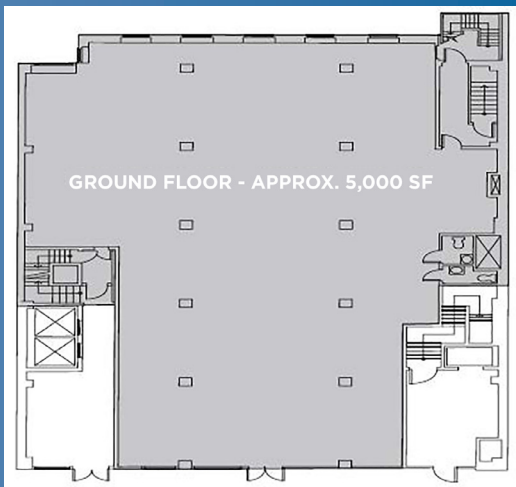
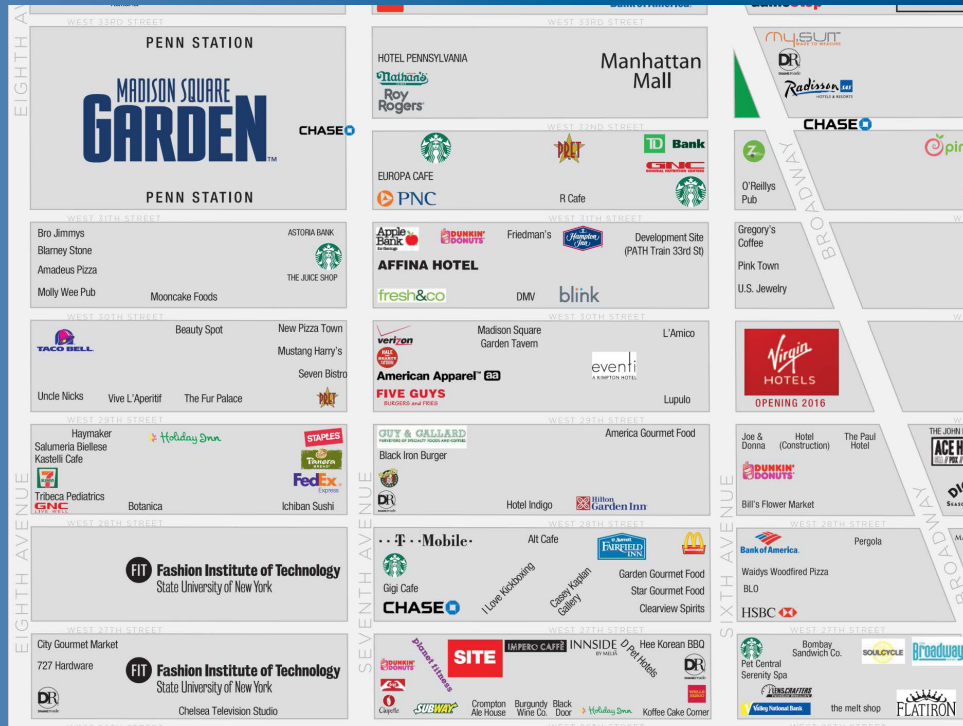
CHELSEA



WINICK



# 144 WEST 27<sup>TH</sup> STREET



## ADDRESS

144 West 27th Street – New York, New York 10001  
(Between 6th and 7th Avenues)

## SIZE

Ground Floor: Approximately 5,000 SF  
Selling Lower Level: Approximately 4,500 SF

## CEILINGS

Ground Floor: 16'  
Lower Level: 10'5"

## ASKING PRICE

Upon Request

## POSSESSION

Immediate

## COMMENTS

- Prime Chelsea retail/restaurant opportunity located steps away from FIT and Penn Station
- Directly adjacent to the new INNSIDE by Melia hotel with over 300 rooms
- Sky lights and windows in the rear of the space on ground and lower levels for great natural light throughout

## NEIGHBORS

FIT, INNSIDE by Melia, Kobeyaki, Planet Fitness, Hilton New York, Ainsworth, Chipotle, Rare Bar & Grill

FOR MORE INFORMATION CONTACT EXCLUSIVE AGENTS:

**LEE BLOCK, EVP**  
212.792.2649  
lee@winick.com

**JEFF WINICK, CEO**  
212.792.2601  
jeff@winick.com

# WINICK

WINICK REALTY GROUP LLC  
LICENSED REAL ESTATE BROKERS  
655 Third Avenue, 17th Floor, New York, NY 10017  
T. 212.792.2600 F. 212.792.2660 winick.com

Although all information regarding property for sale, rental or financing is from sources deemed reliable such information has not been verified, and no express representation is made nor is any to be implied as to the accuracy thereof, and it is submitted subject to errors, omissions, change of price, rental or other conditions, prior sale, lease or financing, or withdrawal without notice.