



**5 East 47<sup>th</sup> Street**  
New York, NY 10017



**WALTER & SAMUELS, INC.**

419 Park Avenue South, 15th Floor | [walter-samuels.com](http://walter-samuels.com) | 212.685.6200

# WELCOME

## Option 1

### Single Office

Full floor 2,500 SF

### Contiguous

2nd - 7th floor: 15,000 SF

### Retail

GF floor: 2,000 SF

BSMT floor: 1,500 SF

## Option 2

### Full Private Bulding

Retail: 3,500 SF

2nd - 7th floor: 15,000 SF

Total: **18,500 SF**

# To 5 East 47th Street

## Building stack

5th Avenue



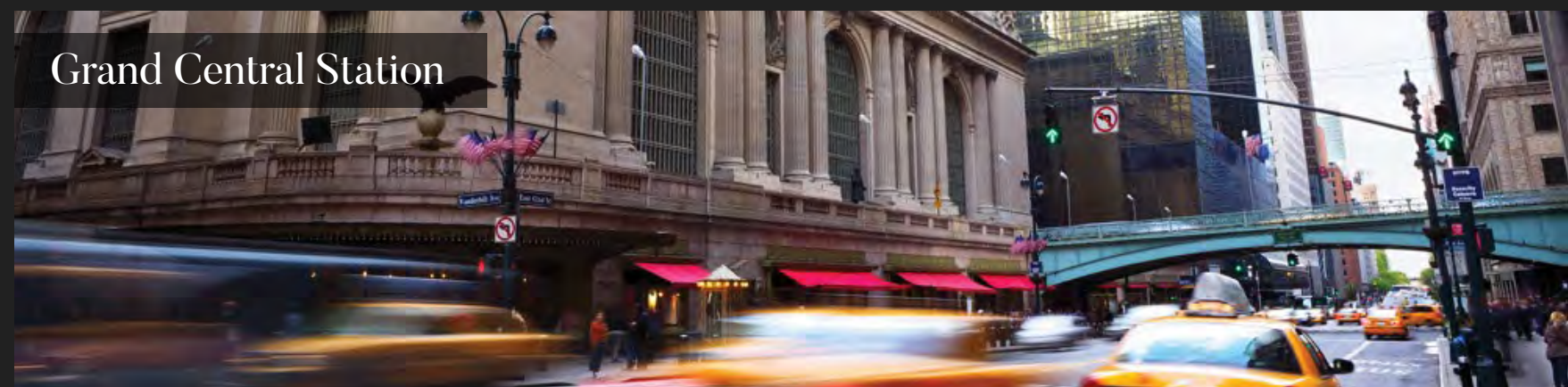
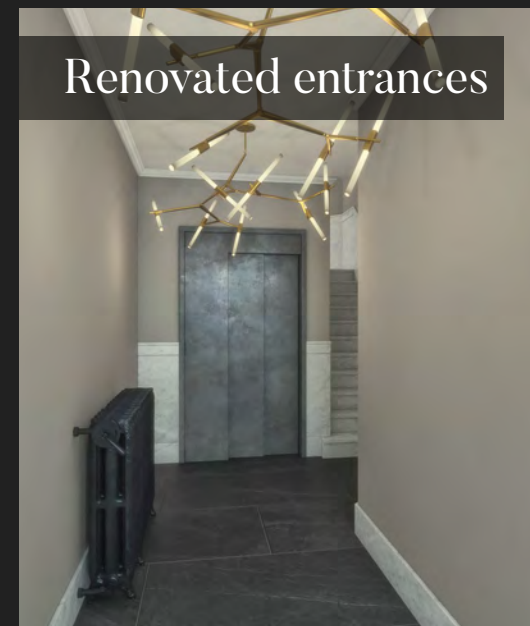
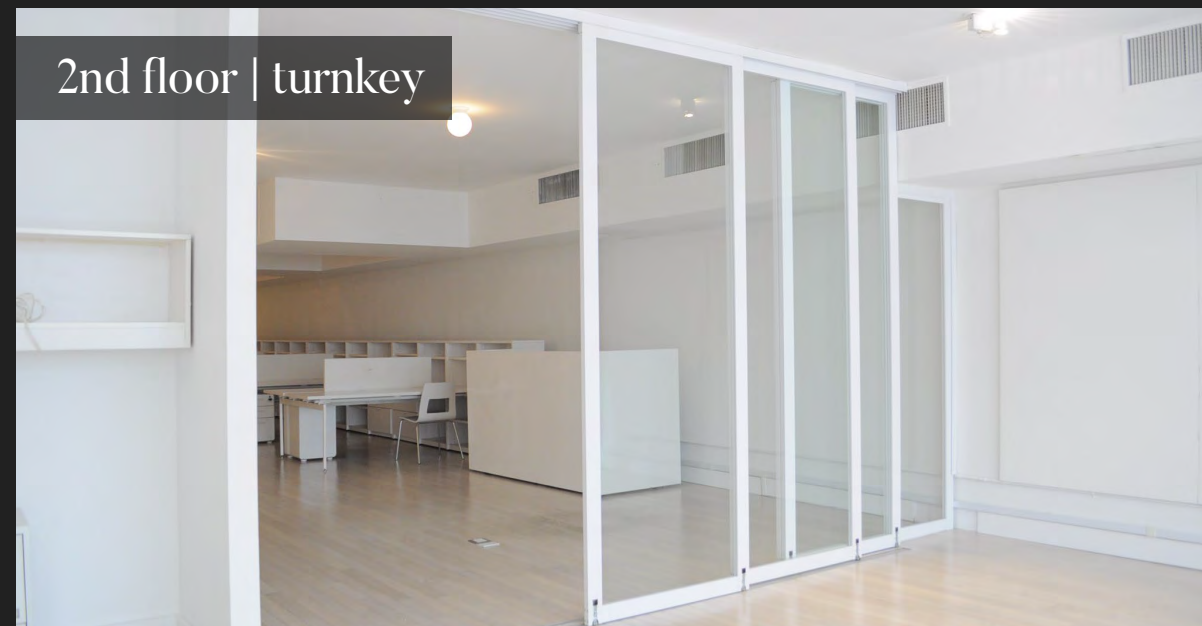
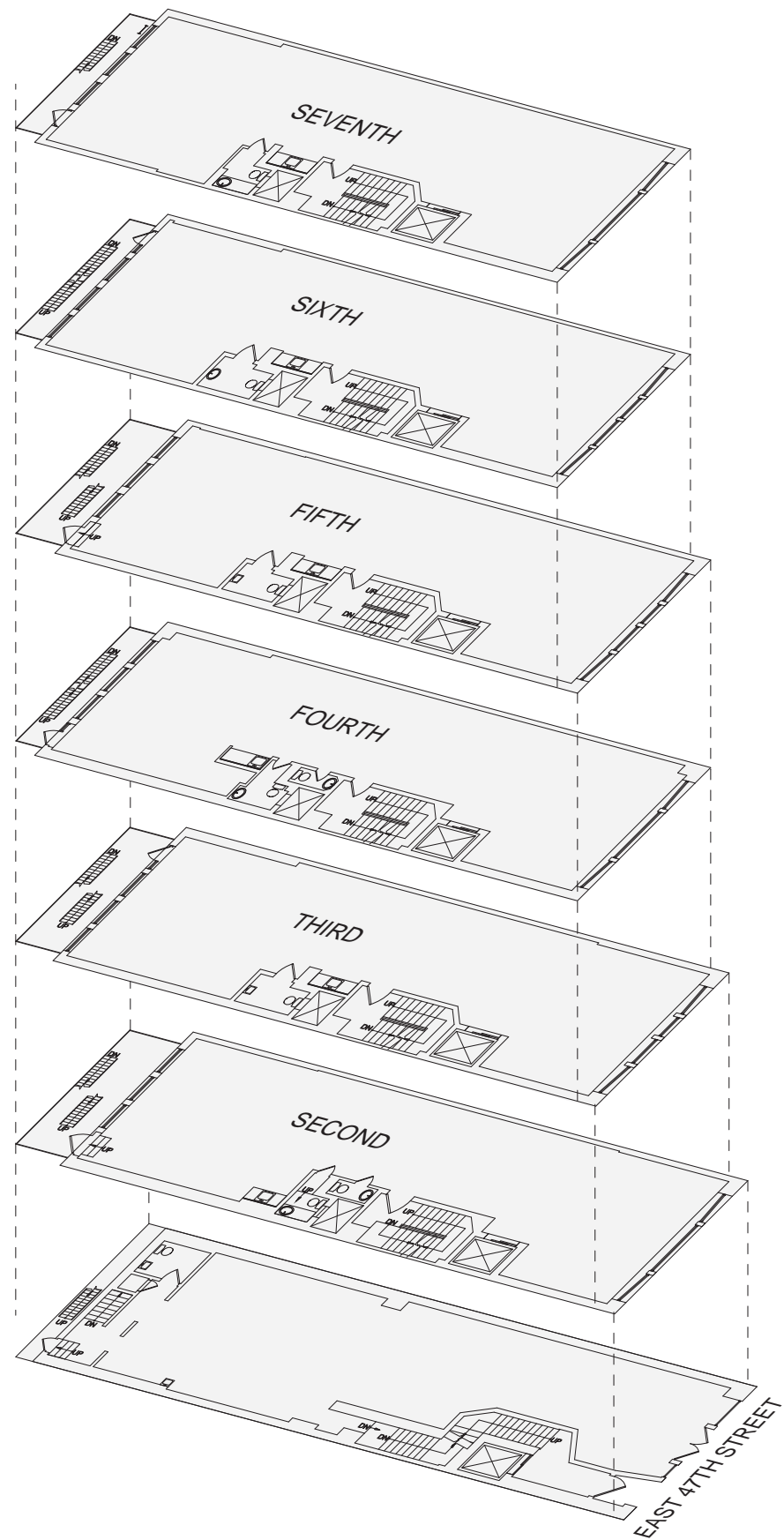
Lobby

GF: 2,000 RSF - Retail

BSMT: 1,500 RSF



# LOCATION Midtown neighborhood





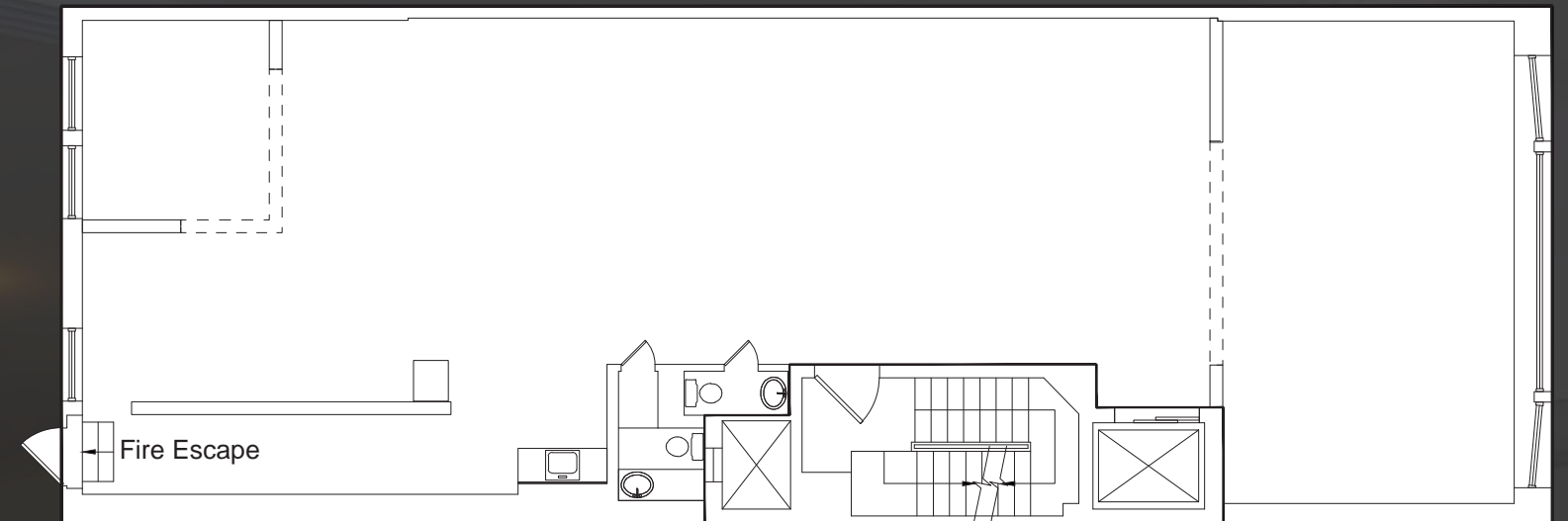
# Typical floor plate

5 East 47th Street

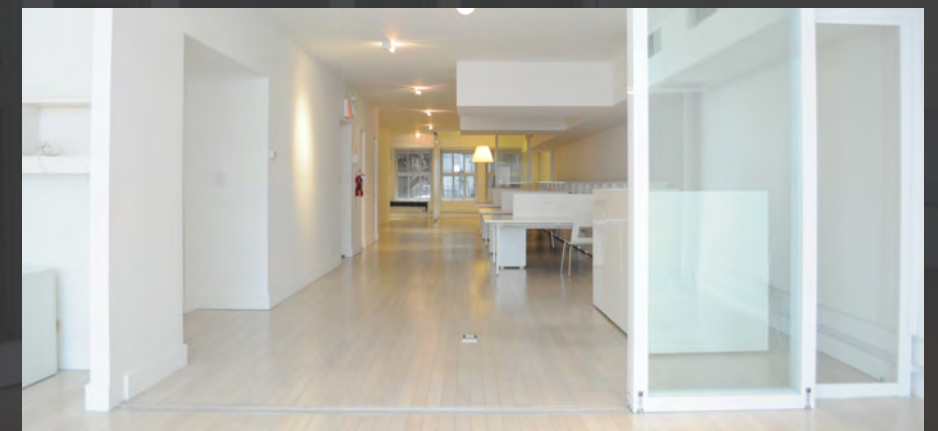
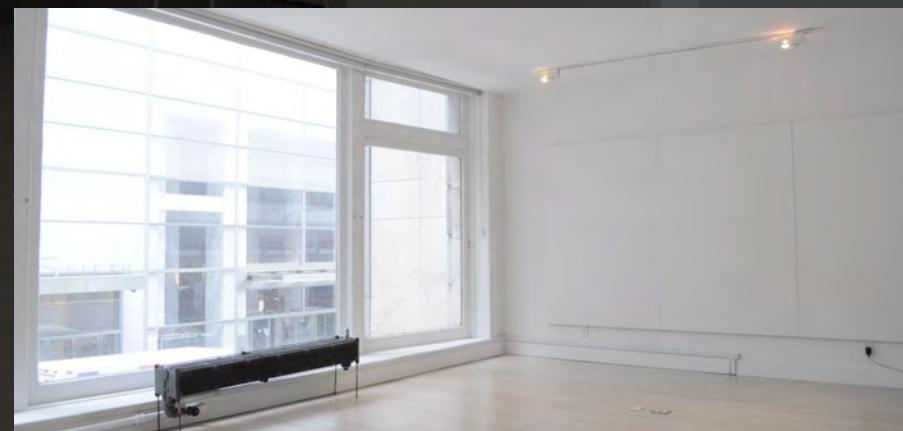
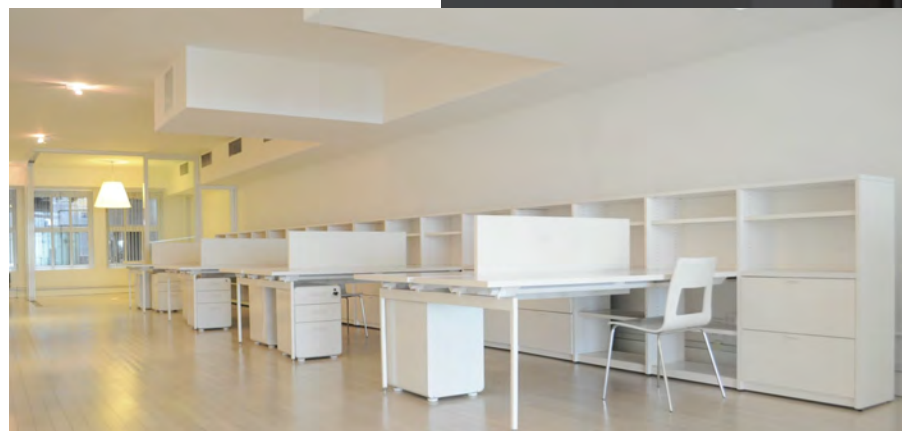
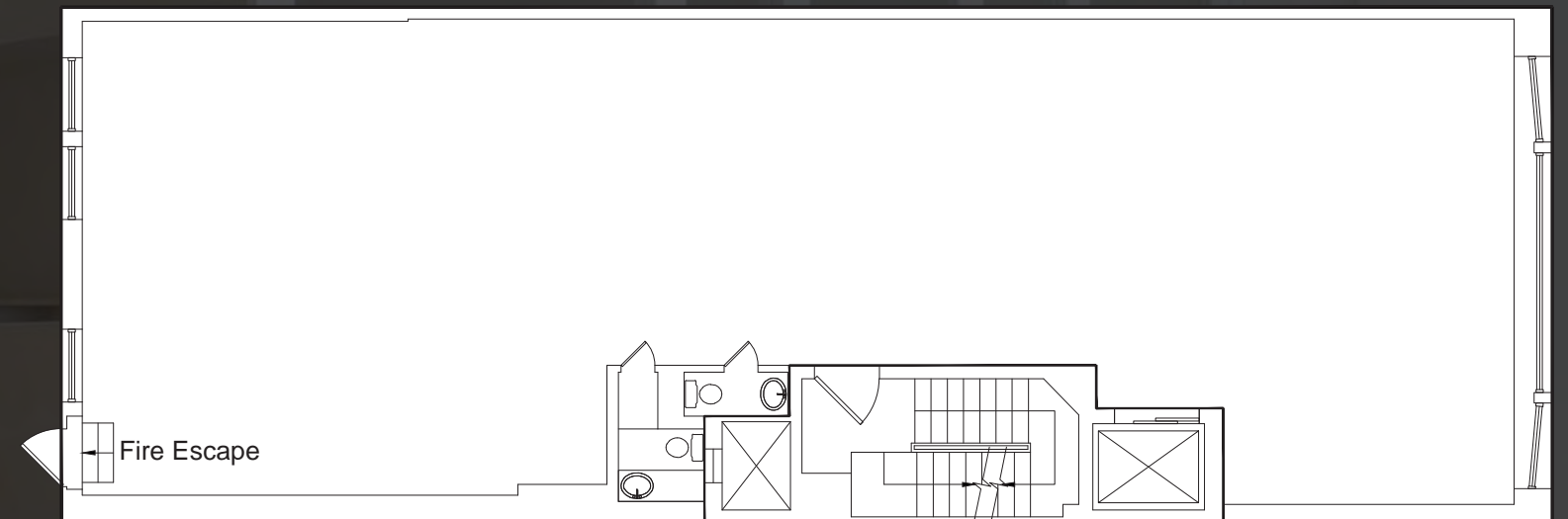
## FULL FLOOR HIGHLIGHTS AND DETAILS

- 2,500 RSF
- Brand new elevators (July 1st, 2021)
- Large open workstation
- Hardwood floors
- Glass office fronts (on 2nd floor)
- New furniture (can be made available)
- Copy machine areas
- Full wet pantry

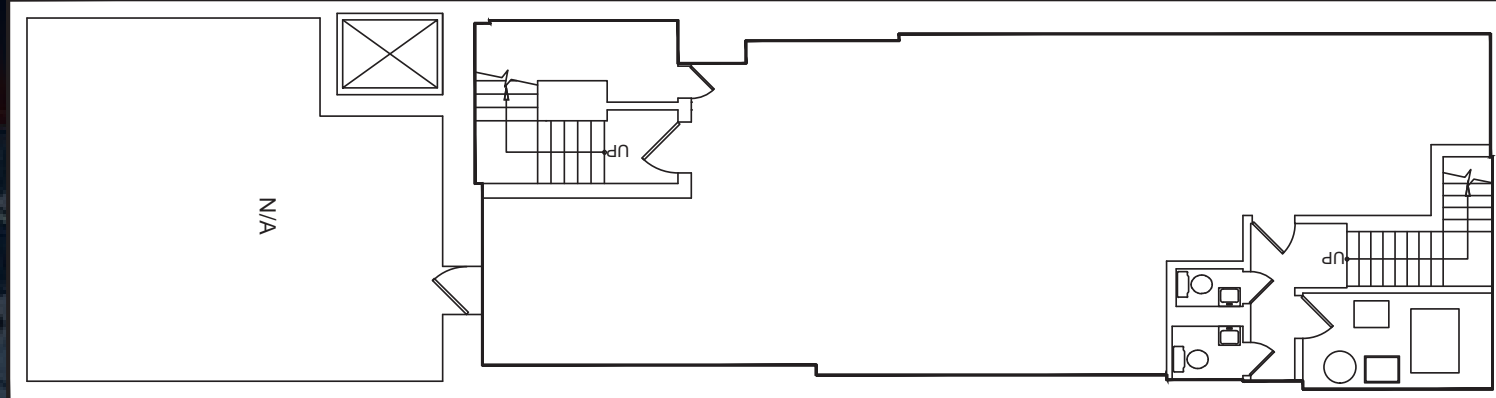
Build out



White box

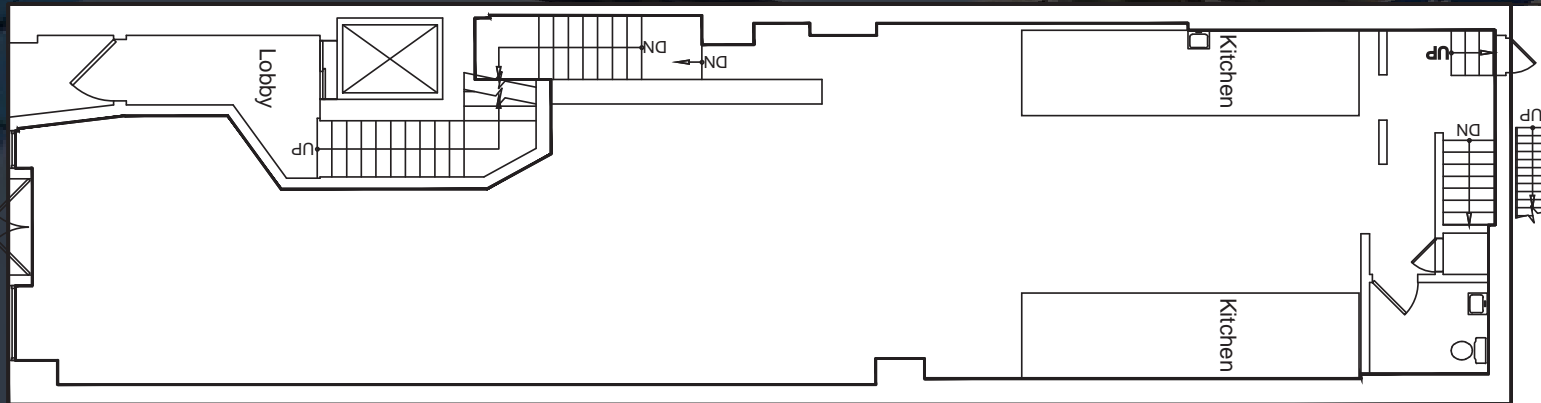


BSMT



5 EAST 47TH STREET (RETAIL SPACE)

GF



# Retail space

5 East 47th Street

## RETAIL HIGHLIGHTS AND DETAILS

- 2,000 RSF
- GF 2X sides of vented kitchen hoods
- Large open area in the front
- steps away from Fifth Avenue
- New building facade
- Turnkey
- Baemenet can be made available







WALTER & SAMUELS, INC.

Contact: Justin Gentile  
+1.212.696.7174 | [jgentile@walter-samuels.com](mailto:jgentile@walter-samuels.com)

419 Park Avenue South, 15th Floor New York, NY 10016